



**STRATA**  
SUPERIOR WELDING PRODUCTS

MIG ARC **200A**

**EZIMIG215C PACK**



  
**200A**  
Max Output (MIG)

  
**5.0mm**  
Max Electrode Size

  
**15A**  
230V



## 200A MIG/ARC Inverter Welder w/ Trolley & Storage

- ✓ **MIG Inductance with adjustable pre-flow, post-flow, burnback & soft start settings** - greater control for MIG welding operation
- ✓ **Production tested with 440V** - Extreme stress testing in production for rugged reliability.
- ✓ **Professional 4-Roll Wire Feeder** - smooth & consistent wire feed
- ✓ **2T/4T/Spot Weld Trigger Control**
- ✓ **Dual digital display meters** - accurate pre-setting & feedback of parameters & output
- ✓ **IGBT Inverter Technology** - Smooth & stable output, increased reliability
- ✓ **Lightweight & compact design** - ideal for portable applications
- ✓ **Aluminium Chassis**
- ✓ **Industrial IP23 casing with front panel protection** - Resistant to damage, moisture & corrosion
- ✓ **Lift TIG operation** - for precise & aesthetically important jobs
- ✓ **Reverse polarity MIG welding operation** - suited for gas & gasless mig welding
- ✓ **High quality, over-specified components** - offers superior longevity & reliability
- ✓ **Intelligent protection system** - Temp., voltage & current sensors for increased reliability/safety
- ✓ **Generator Friendly** - Designed to work w/ generator power supply & protect from surges
- ✓ **Quick connect inlet gas fitting** - Tool-less easy connection of gas supply to machine

Description	Details
<b>DIMENSIONS (LxWxH)</b>	550 x 215 x 415mm
<b>WEIGHT</b>	20.5kg
<b>INPUT POWER SUPPLY</b>	230V AC 15A 50/60Hz
<b>INPUT POWER SUPPLY TOLERANCE</b>	+/- 10%
<b>MAXIMUM INPUT CURRENT</b>	42A
<b>GENERATOR CAPACITY</b>	10KVA
<b>MIG CURRENT OUTPUT</b>	40 - 200A
<b>MIG OUTPUT VOLTAGE</b>	16 - 24V
<b>MIG DUTY CYCLE</b>	200A@25% 155A@60% 120A@100%
<b>WIRE FEEDING SPEED</b>	1.5 - 16.5 m/minute
<b>MMA CURRENT OUTPUT</b>	10A - 160A
<b>MMA O/C VOLTAGE</b>	63V

Description	Details
<b>MMA DUTY CYCLE</b>	160A@15% 140A@60% 110A@100%
<b>MIG DRIVE ROLLERS AVAILABLE</b>	<b>V Groove:</b> 0.6 /0.8/0.9/1.0mm <b>Knurled:</b> 0.8/0.9/1.0mm <b>U Groove:</b> 0.8/1.0mm
<b>MIG WIRE SPOOL SIZE</b>	D200mm / D300mm 15KG
<b>WELD THICKNESS</b>	10mm Steel
<b>INSULATION CLASS</b>	IP23
<b>MMA ROD SIZE</b>	1.6 -5.0mm
<b>POWER EFFICIENCY</b>	85%
<b>POWER FACTOR</b>	0.65
<b>STANDARDS</b>	EN60974-1:2012
<b>WARRANTY</b>	48 Months

### Includes:



**EZIMIG215C PACK**  
User guide, specs, videos

[LEARN MORE](#)



## MIG Inverter Welder Accessories & consumables

○ Standard ● Optional ☆ Common Consumables

ACCESSORY:		EZIMIG215C PACK	
	Arc Leads	○	AAL3550
	Earth Leads	○	AEL3550
	MIG Torch	○	MT250-4E
	Argon Regulator	○	GR102ARFL
	Gas Hose	○	GH08
	MIG Starter Kit	●	MB25KIT
	TIG Torch	●	17374
	TIG Consumable Pack	●	DCKIT
	Drive Roller 'V' Groove 0.6 - 0.8mm	○	17835 (x2)
	Drive Roller 'V' Groove 0.9 - 1.0mm	○	17836 (x2)
	Drive Roller 'V' Groove 1.0 - 1.2mm	●	17837 (x2)
	Drive Roller 'U' Groove 0.8 - 1.0mm	●	17841 (x2)
	Drive Roller 'U' Groove 1.0 - 1.2mm	-	-
	Drive Roller 'U' Groove 1.2 - 1.6mm	●	17842 (x2)
	Drive Roller Knurled 0.8 - 0.9mm	○	17838 (x2)
	Drive Roller Knurled 1.0 - 1.2mm	●	17839 (x2)
	Drive Roller Knurled 1.2 - 1.6mm	●	17840 (x2)
	MIG Tips (MMT) 0.6 - 1.6mm	☆	0.6, 0.8, 0.9, 1.0, 1.2, 1.6mm
	MIG Shrouds (MCN) 70 = Conical 71 = Cylindrical	☆	MTA2570 MTA2571
	Tip Adaptors (MTA) 81 = M6 82 = M8	☆	MTA2581 MTA2582

### Welding Magnets

WT-WMG03	3" Welding Magnet
WT-WMG05	5" Welding Magnet



### Chipping Hammer

✓ Heavy duty chipping hammer for the trade

WT-SPCH	Spring Handle Chipping Hammer
---------	-------------------------------



### Automatic Welding Helmets

- ✓ Variable Shade
- ✓ Complete with batteries ready to go
- ✓ Suitable for automotive DIY and industrial use.

WT180	Variable Shade 9-13
WT350	True Colour, 4 Sensor with grind function
SV3000	True Colour, Shade 5 - 13 + Grind Function (MIG/TIG/MMA/Plasma)
SV4000	Panoramic view with auto darkening side panels. Shade 4 - 13 + Grind Function (MIG/TIG/MMA/Plasma)
DW7000XL	True Colour, with grinding visor. Shade 5 - 13 + PRSL Filtration System (MIG/TIG/MMA/Plasma)



DW7000XL comes with battery powered air respirator.

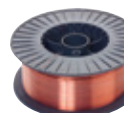
### Mild Steel MIG Wire - ER70S-6

✓ Copper coated MIG wire for general purpose welding of mild steel using CO<sub>2</sub> or argon based shielding gases.

MW5KG06	5kg Spool - 0.6mm MIG wire (D200)
MW5KG08	5kg Spool - 0.8mm MIG wire (D200)
MW5KG09	5kg Spool - 0.9mm MIG wire (D200)



D300 MW15KG08S	15kg Spool - 0.8mm MIG wire (D300)
D300 MW15KG09S	15kg Spool - 0.9mm MIG wire (D300)
D300 MW15KG10	15kg Spool - 1.0mm MIG wire (D300)
D300 MW15KG12	15kg Spool - 1.2mm MIG wire (D300)



### Industrial Storage Trolley

✓ Pull out drawer with storage, 25.85kg

32673	Integrated Trolley to suit Compact MIG Models
-------	---

